

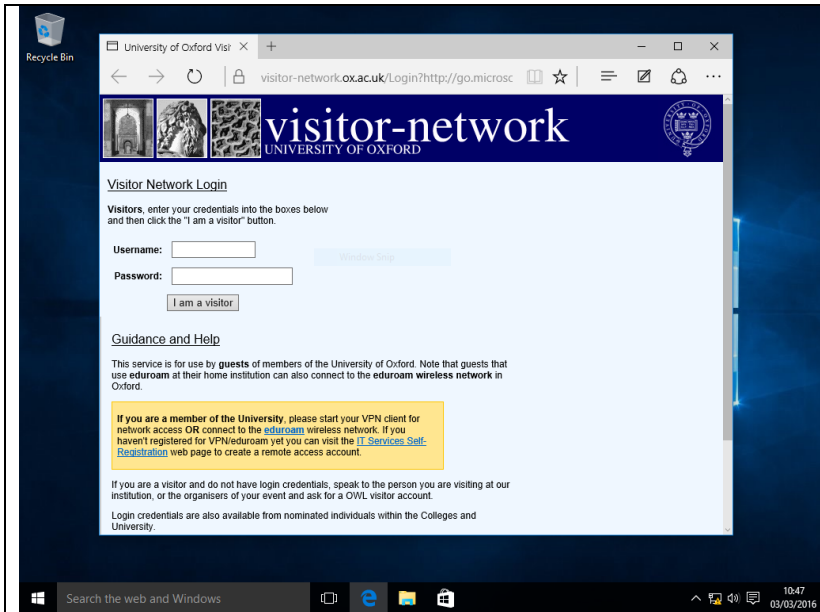
Wired Network Access – Windows 10

Last updated on 14/03/2016

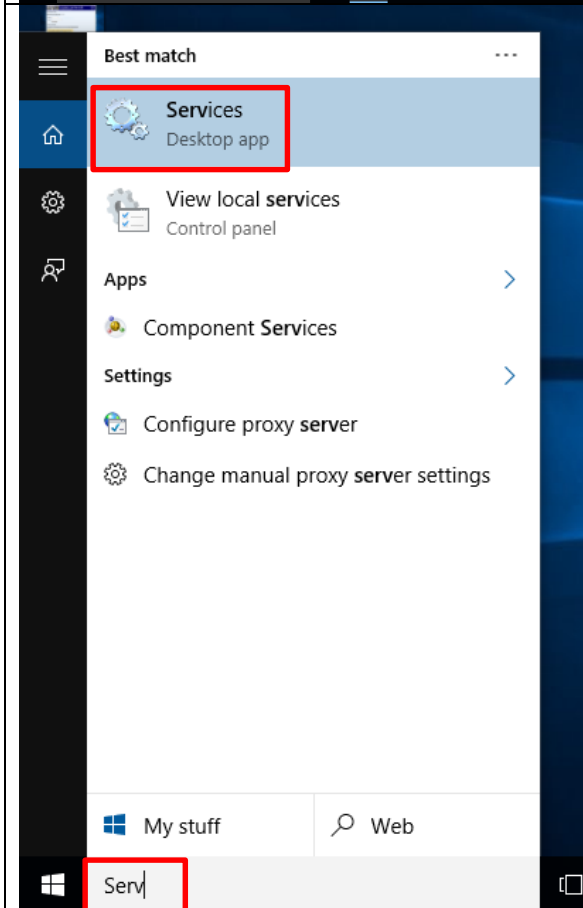
Prerequisites

Your computer must have a wired network port (or via USB adapter) and you must have valid Remote Access user account details. If you are unsure about your Remote Access user account details contact the IT Office (it-support@queens.ox.ac.uk or 01865 279205).

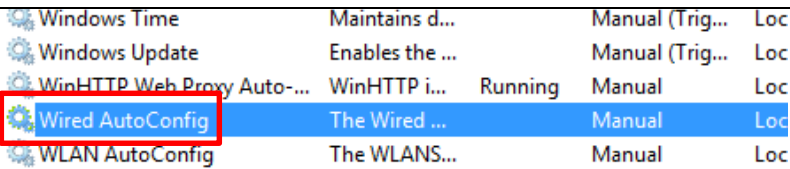
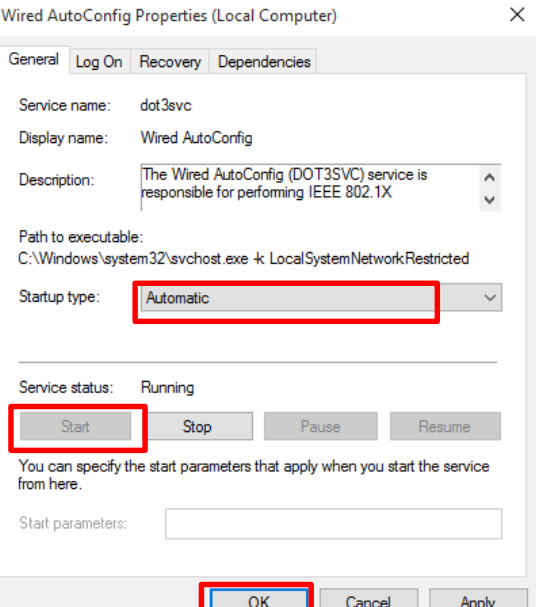
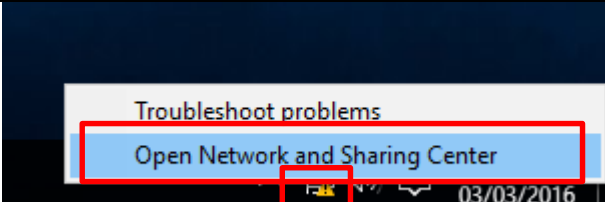
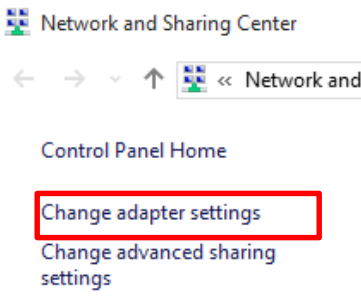
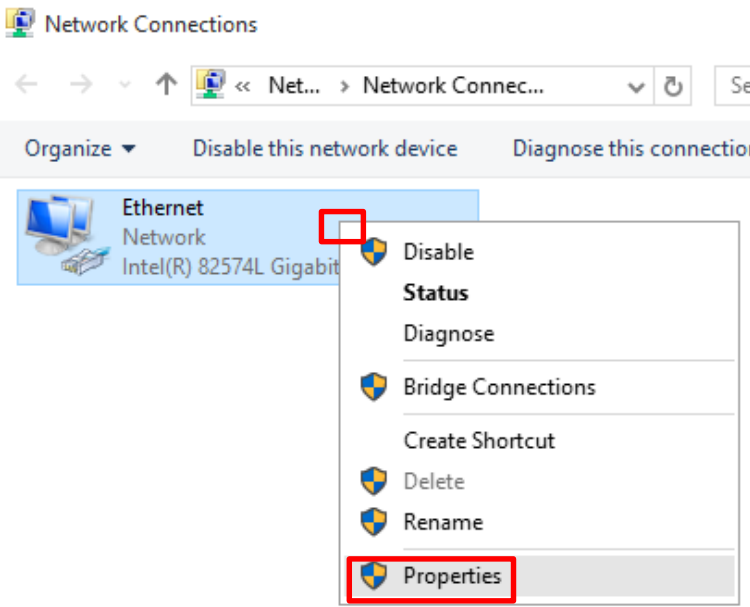
Guide

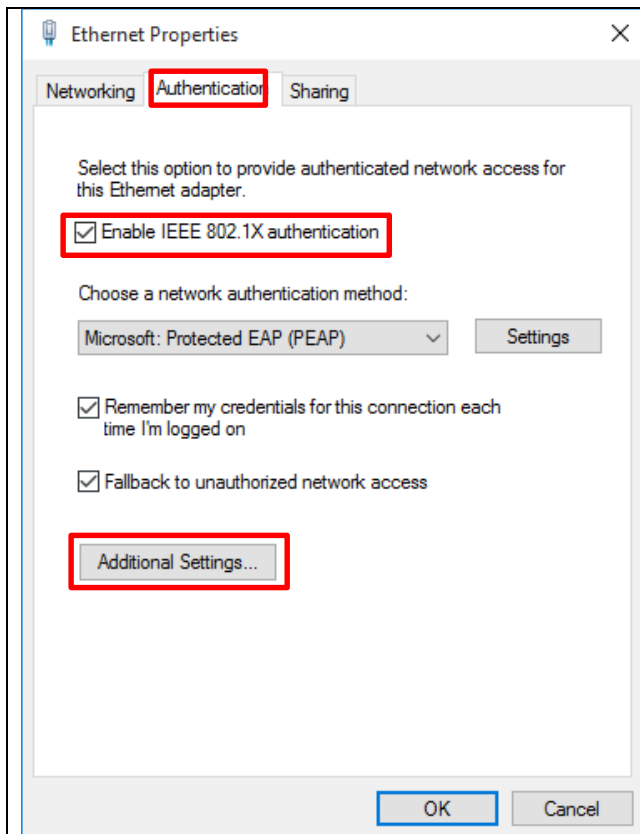


First (if you haven't done so already) plug the network cable into the PC. After a short wait you may find the OWL Visitor page loads up.

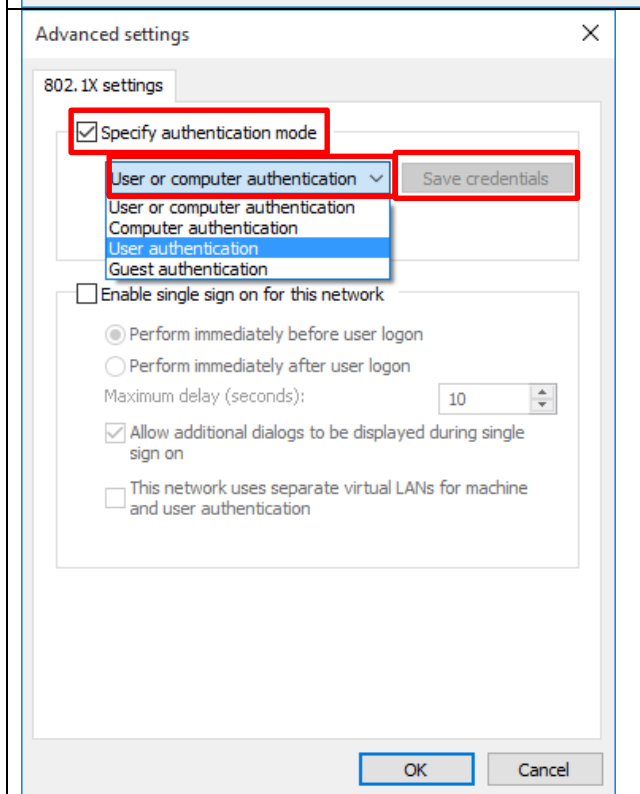


To actually gain access to the internet head to the **Start menu** and type **Services** and then from the menu that appears click the **Services** option.

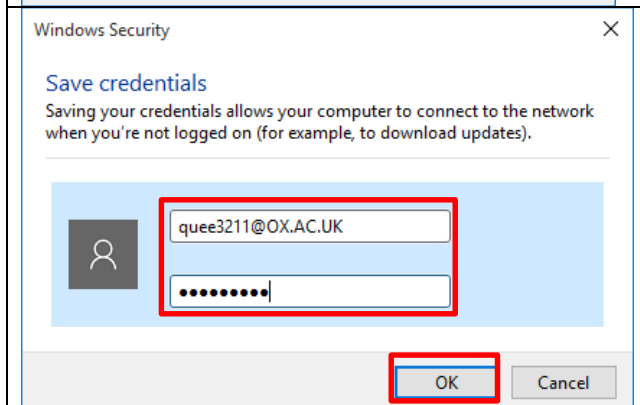
	<p>In the window that appears scroll down to find Wired AutoConfig and double click on it.</p>
	<p>In the window that appears set the Startup type to Automatic and then click the Start button.</p> <p>After a short wait the Wired AutoConfig service will start, click OK.</p>
	<p>To finish the setup right click on the Network icon (will have a yellow triangle against it) and select Open Network and Sharing Center.</p>
	<p>In the window that appears click Change adapter settings.</p>
	<p>Right click on Ethernet and select Properties.</p>



In the window that appears head to the **Authentication** tab, tick the **Enable IEEE 802.1x authentication** box and then click **Additional Settings...**

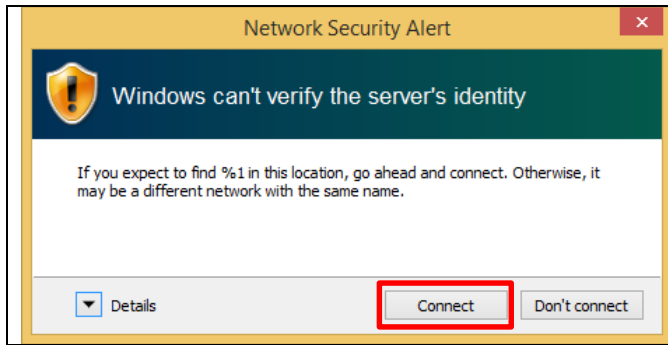


In the window that appears tick the **Specify authentication mode** box, from the drop down menu select **User authentication** and then click **Save credentials**.



In the window that appears enter your **remote access credentials** ensuring you include (in capitals) **@OX.AC.UK at the end**. Click **OK**.

Close any other windows that may still be open and return to the desktop.



After a short wait a prompt may appear (similar to the one in the image to the right) asking you to confirm that you wish to connect to the network **click the Connect button**.

You will now be connected to the Internet.